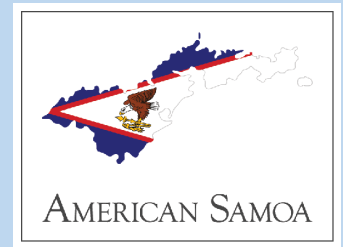




# JIM & EMI CIVALE

## MISSIONARIES TO THE SAMOAN ISLANDS

Testifying ... repentance toward God, and faith toward our Lord Jesus Christ. **ACTS 20:21**  
**JUNE 1, 2020**



Dear Friends,

In some ways, the month of May has felt like a total standstill. In others, like we're going full speed ahead.

I am still grounded in American Samoa, recycling the few changes of clothes I had in my carry-on for what was supposed to be a ten-day trip (and is now nearly a hundred). There is still no word when flights will open up again and it feels, at times, like time really is standing still. While Emi and I remain encouraged most of the time, we do have a few low moments here and there, so please pray for us. Churches and schools remain closed in American Samoa even though we have no cases of covid-19 in the territory no international travel permitted. We are praying that churches will open soon. For now, I am preaching through Facebook Live (see screenshot to the right) which has allowed our church people to tune as well as a number of others.



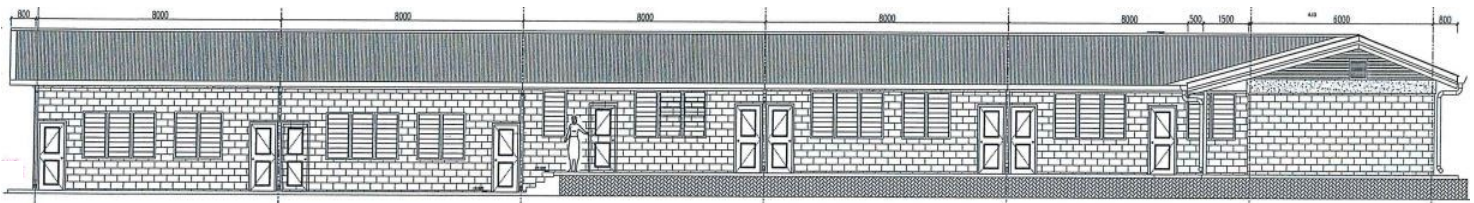
Over in Samoa, churches and schools reopened in May, allowing Pastor Sopo and Assistant Pastor Ropati to minister more actively and effectively. Emi has also been able to throw herself full-time into the school ministry which has been good for her. In our most recent phone conversation, Emi told me of several school parents she's been able to minister to and a cousin she was able to lead to the Lord. As you can imagine, hearing of anyone coming to Christ always cheers me up.

We have also been able to go full steam ahead with our building project. Between the funds the church members in Asau gave and saved over the last two years and a grant we just received in Samoa, we were able to complete the drawings, receive all the necessary permits and licenses, and place the order of materials for the project. Although I packed all that giving, planning, and purchasing into one sentence, it reflects months and months of sacrifice, travel, and work. I am blessed that there are great people working on all that over in Samoa even in my absence. Over the last three months, I have only been able to help with some of the paperwork from this end. They've done all the heavy lifting. I included one of the pictures from the architect's drawing below.

In American Samoa, I began Bible college classes with a recently-retired gentleman who wants to go into full-time ministry. Over the years, he had been involved in different Christian ministries but had a more ecumenical and neo-evangelical approach. He began to recognize the importance of Biblical separation and fundamentalism and approached me with a desire to become better grounded and properly trained. We are three weeks into our first courses (*Fundamentals of the Faith, Biblical Distinctives of Baptists, and Biblical Literacy*) and so far, he is eating it up.

Thank you again and again for your friendship, prayers, and support. We are praying for you all as well as you deal with the covid-related restrictions in your areas and the social unrest that is raging at the moment.

*Jim & Emi Civalé*



011-685-772-6760 (Samoa) or 684-254-0273 (American Samoa)  
 civaliejim@yahoo.com — jimcivale.edifyhub.com  
 Sent by Dry Run Independent Baptist Church — www.dryrunchurch.com  
 Sent through Baptist International Missions, Inc. — www.bimi.org